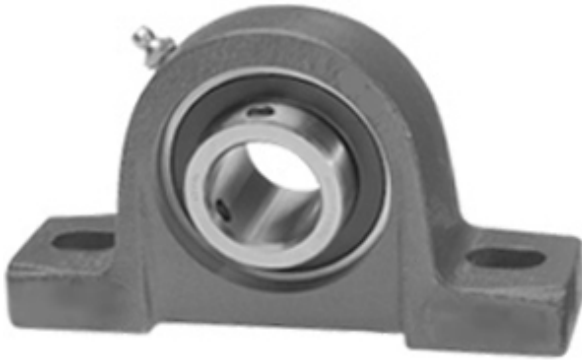




Shandong Tinghan Bearing Co., Ltd.

2 Inch | 50.8 Millimeter x 2.032 Inch | 51.613 Millimeter x 2.25 Inch | 57.15 Millimeter IPTCI UCP 210 32 L3 Pillow Block Bearings



UCP 210 32 L3 Bearing 2D drawings and 3D CAD models

Bearing No. UCP 210 32 L3

Category	Pillow Block Bearings
Inventory	0.0
Manufacturer Name	IPTCI BEARINGS
Minimum Buy Quantity	N/A
Weight	3.09
Product Group	M06110
Number of Mounting Holes	2
Mounting Method	Set Screw
Housing Style	2 Bolt Pillow Block
Rolling Element	Ball Bearing
Housing Material	Cast Iron
Expansion / Non-expansion	Non-expansion
Mounting Bolts	5/8 Inch
Relubricatable	Yes
Insert Part Number	UC210-32
Seals	L3 Seal
Housing Configuration	1 Piece Solid
Inch - Metric	Inch
Other Features	Single Row Standard Duty Wide Inner Race High Base
Long Description	2 Bolt Pillow Block; 2" Bore; 2-1/4" Base to Center Height; Set Screw Mount; Ball Bearing; Relubricatable; Cast Iron; L3 Seal; Non-expansion



Shandong Tinghan Bearing Co., Ltd.

Category	Pillow Block
UNSPSC	31171511
Harmonized Tariff Code	8483.20.40.40
Noun	Bearing
Keyword String	Pillow Block
Manufacturer URL	http://www.iptci.com
Manufacturer Item Number	UCP 210 32 L3
Weight / LBS	6.8
Bolt Spacing Minimum	0 Inch 0Millimeter
D	2.032 Inch 51.613 Millimeter
Bolt Spacing Maximum	0 Inch 0Millimeter
Nominal Bolt Center to Center	6.3 Inch 160 Millimeter
d	2 Inch 50.8 Millimeter
Actual Bolt Center to Center	6.3 Inch 159Millimeter
B	2.25 Inch 57.15 Millimeter